

Wild, Free, & Full of Possibility!

*Presented by **SCMEDF**, Team 4*

SCMEDF



SOUTH-CENTRAL MONTANA
ECONOMIC DEVELOPMENT
FOUNDATION

The Yellowstone, Big Horn, and Carbon Counties Region...



"Wild, Free, and Full of Possibility!"

SCMEDF



SOUTH-CENTRAL MONTANA
ECONOMIC DEVELOPMENT
FOUNDATION

Life in The YBC



- Rich in arts and culture
- Abundant outdoor recreational activities
- Favorable climate
- Strong family-oriented community
- Excellent education system

SCMEDF



SOUTH-CENTRAL MONTANA
ECONOMIC DEVELOPMENT
FOUNDATION



Advantages of Doing Business in The YBC

- **Transportation Hub**
- **Available Sites**
- **Workforce Advantages**
- **Business-Friendly Tax Incentives**



Transportation Hub



- I-90; I-94
- BNSF Railway runs through Billings (and throughout the YBC)
- Billings Logan International Airport

SCMEDF



SOUTH-CENTRAL MONTANA
ECONOMIC DEVELOPMENT
FOUNDATION

Available Sites



- **Billings Industrial Revitalization District**
- **Existing infrastructure**
- **Prime industrial sites**



SCMEDF



SOUTH-CENTRAL MONTANA
ECONOMIC DEVELOPMENT
FOUNDATION

Workforce Advantages

- Abundant labor pool
- Attractive wage rates
- Educated workforce
- Available workforce training dollars
- On-site training program with Montana State University College of Technology



SCMEDF



SOUTH-CENTRAL MONTANA
ECONOMIC DEVELOPMENT
FOUNDATION



Business-Friendly Tax Environment

- Flat 6.25% Corporate Income Tax
- MT business incentive fund
- Yellowstone County property tax abatement program
- Alternative Energy Investment Tax Credit
- Property Tax Abatement for Production and Manufacturing Facilities (50%)

SCMEDF



SOUTH-CENTRAL MONTANA
ECONOMIC DEVELOPMENT
FOUNDATION



Growing Renewable Energy Sector

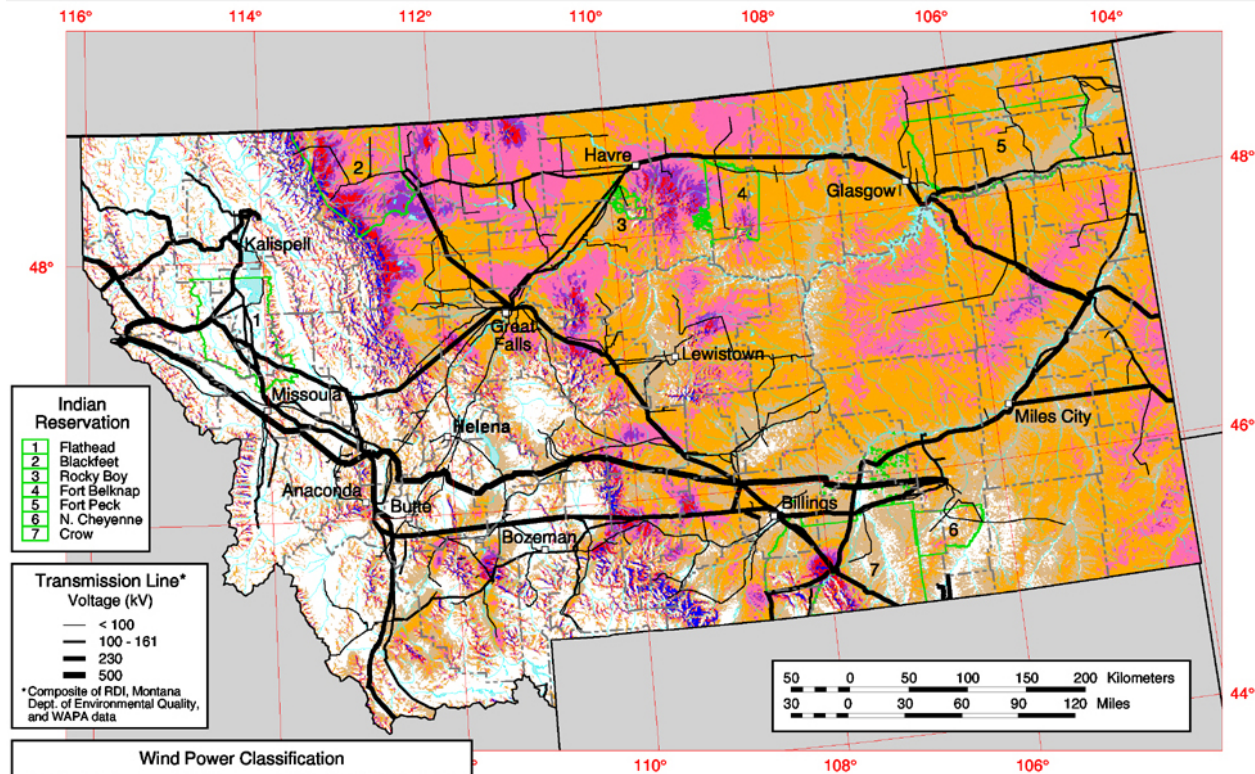


- South-Central MT is in the heart of the windbelt
- MT is 5th in potential wind energy production¹
- Total wind energy potential: 1,020 (billions KWh/year)
- Total installed wind energy capacity: 272 megawatts



¹ (source: www.nationalwind.com)

Montana Wind Power



Montana Wind Power Resource Estimates

The wind power resource estimates were produced by TrueWind Solutions using their Mesomap system and historical weather data. This map has been validated with available surface data by the National Renewable Energy Laboratory and wind energy meteorological consultants.

U.S. Department of Energy
National Renewable Energy Laboratory



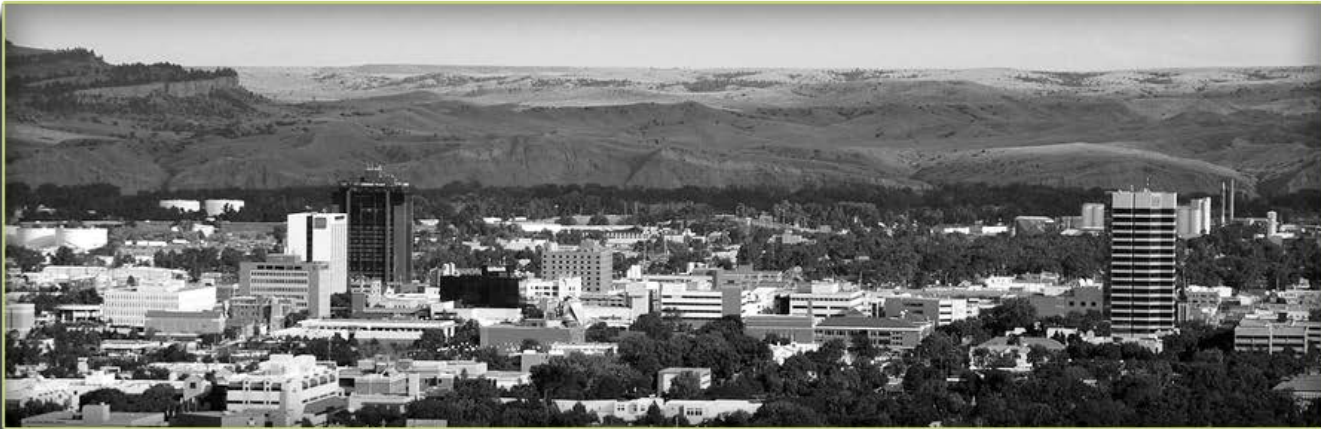
15-MAR-2002 1.1.1

SCMEDF



SOUTH-CENTRAL MONTANA
ECONOMIC DEVELOPMENT
FOUNDATION

Thank You!



SCMEDF
4200 Division St.
Billings, MT 59101
www.scmef.org

SCMEDF



**SOUTH-CENTRAL MONTANA
ECONOMIC DEVELOPMENT
FOUNDATION**